



Intentional Care of the Spirit : The Specialty Practice of Faith Community Nursing



(c)2017 Sharon T. Hinton



Sharon T. Hinton D.Min, RN-BC, MSN




**Westberg Institute for Faith Community Nursing,
FCN Project Manager**

hintons@churchhealthcenter.org

www.westberginstitute.org

(c)2017 Sharon T. Hinton

Objectives

-  Describe historical foundations of the current specialty practice of faith community nursing
-  Define aspects of intentional care of the spirit
-  Discuss opportunities for partnering between chaplains, faith community nurses, and other healthcare providers

(c)2017 Sharon T. Hinton



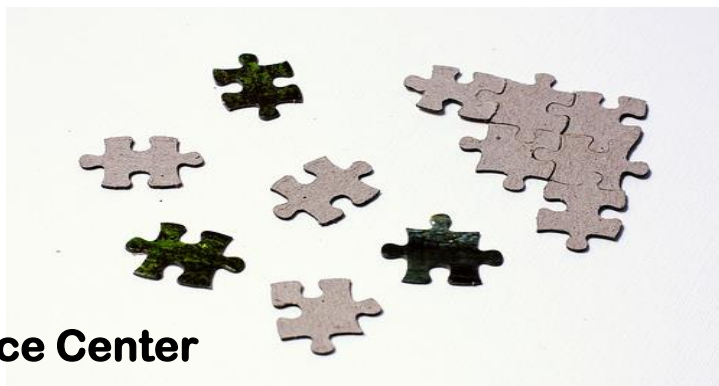
The Specialty Practice of Faith Community Nursing

(c)2017 Sharon T. Hinton



Historical Roots of Faith Community Nursing Practice

- Religious roots
- Nursing roots
- Granger Westberg
- Parish Nurse Resource Center
- International Parish Nurse Resource Center
- Westberg Institute for Faith Community Nursing



(c)2017 Sharon T. Hinton




A word about wording

 **wholistic – holistic**

 **parish – faith community nurse**

(c)2017 Sharon T. Hinton

Core Competencies of Faith Community Nursing Practice

-  **Faith community nursing is a specialty practice**
-  **The FCN is an experienced registered nurse with an active license**
-  **Faith community nursing is considered a calling in which ministry shapes the practice.**

(c)2017 Sharon T. Hinton

Faith Community Nursing Practice

 The practice of faith community nursing requires specialized knowledge and skills to provide *intentional care of the spirit* as a **MEMBER** of the care team.

 The practice of faith community nursing encourages a **PARTNERSHIP MODEL** between faith community nurses, individuals, families, congregations, & communities as well as healthcare and spiritual care providers.

(c)2017 Sharon T. Hinton

Faith Community Nursing Practice

 Faith community nursing contributes to the health of the faith community as well as community outreach.

 Faith community nursing acknowledges the **ANA/HMA *Faith Community Nursing: Scope and Standards of Practice*** as the guide for professional practice in the United States.

(c)2017 Sharon T. Hinton

Certification of Faith Community Nursing Practice

**In 2014, the American Nurses
Credentialing Center (ANCC) in
conjunction with the Health
Ministries Association (HMA)
approved Faith Community
Nursing certification through
portfolio
- RN-BC**



(c)2017 Sharon T. Hinton

Faith Community Nursing Practice Models

Paid – Unpaid

Full time - Part time

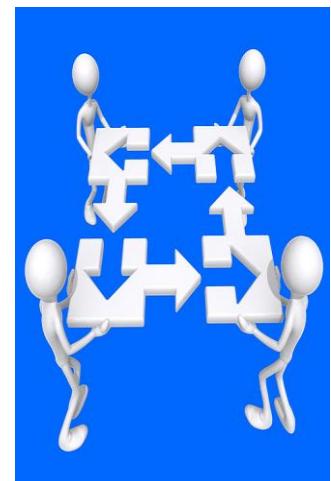
Single congregation – Multiple congregations

Hospital based - Organization based

Individual practice – Team nursing practice

Congregational care – Community outreach

MIX!



(c)2017 Sharon T. Hinton



Define aspects of intentional care of the spirit

(c)2017 Sharon T. Hinton

It's all about relationships!



Body, Mind, Spirit... Self, Others, God

(c)2017 Sharon T. Hinton

Populations Served

Faith Communities

- Individuals
- Families
- Small groups
- Faith community

Community Outreach

- Community groups
- Entire community
- Special populations



Discuss opportunities for partnering between chaplains, faith community nurses, and other healthcare providers

It's all about relationships!



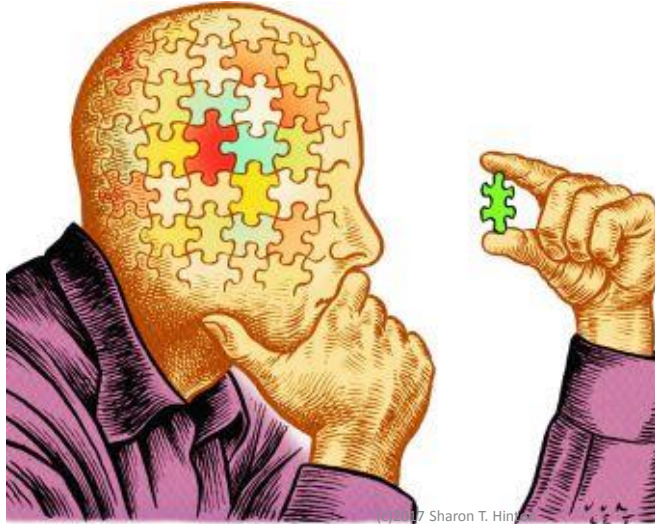
Clergy – FCNs – Chaplains - ...

(c)2017 Sharon T. Hinton



(c)2017 Sharon T. Hinton

Case Study



Case Study Discussion Questions

- 1. How can clergy and FCN assist the hospital staff and chaplain to care for Mrs. Jones?**
- 2. How can the various caregivers work together to assure that Mrs. Jones receives the appropriate care after discharge?**
- 3. What does medical care have to do with spiritual care in this case?**

(c)2017 Sharon T. Hinton

